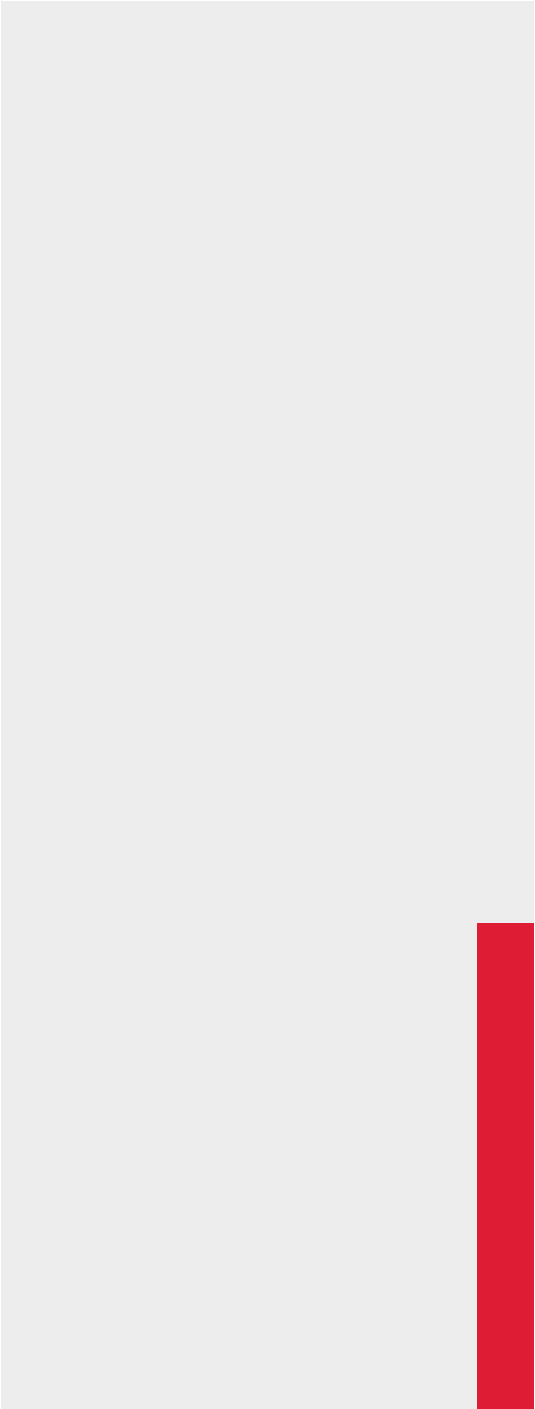


PORTFOLIO

2024



ABOUT

CSI Global is a trusted partner and an international solutions provider that leads projects throughout their entire lifecycles, from conceptual design to construction. The value proposition we bring to the table is our highly educated and experienced team delivering world-class architecture and engineering at competitive rates. Quality and commitment are our key differentiators. We have a proven track record of successfully completing our client's projects in an efficient, timely, and cost-effective manner.

30+

countries

25M+

revenue

43+

yrs

300+

PPL

ONE-STOP-SHOP

As a single-source firm, we achieve better drawing coordination, team communication, overall higher quality, and consistency for our clients.



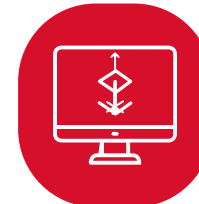
Architecture



Structural
Engineering



MEP
Engineering



BIM Support &
Coordination



Advisory &
Consultancy



PM/CM



CAD &
Drafting



Civil
Engineering

Services

- Land and master planning
- Initial programming
- General layout design
- Technical project coordinator
- Schematic Design (SD)
- Design Development (DD)
- Construction Documents (CD)
- Permit Set (PS)
- Bidding Set (BS)
- Renders for visual communication
- Peer review
- BIM Modeling

Specialties

- Urban development
- Office buildings
- Residential
- Industrial Architecture
- Educational
- Mixed uses
- Warehouse

OUR CLIENTS



LATEST PROJECTS

We are thrilled to share with you our latest 2023 projects, which reflect our ongoing commitment to excellence and continuous improvement. What truly differentiates us is our 'One-Stop Shop' approach. At CSI Global, we proudly offer a comprehensive range of services all under one roof. As your single-source solution, we deliver not only impeccable drawing coordination and seamless team communication but also an unparalleled level of quality and unwavering consistency. This is how we redefine excellence in the AEC industry.



Commitment

We make things happen



Innovation

We create new things with added value



Excellence

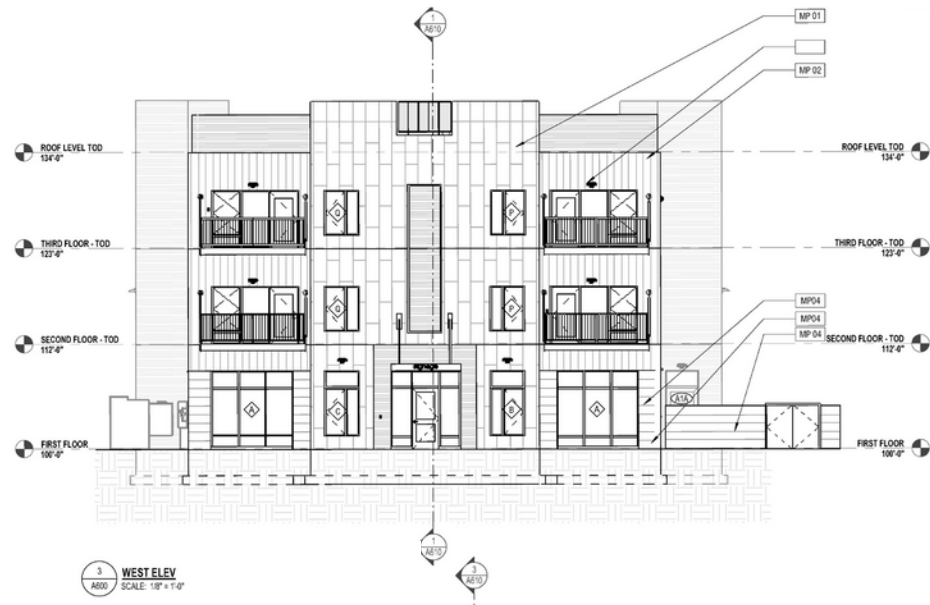
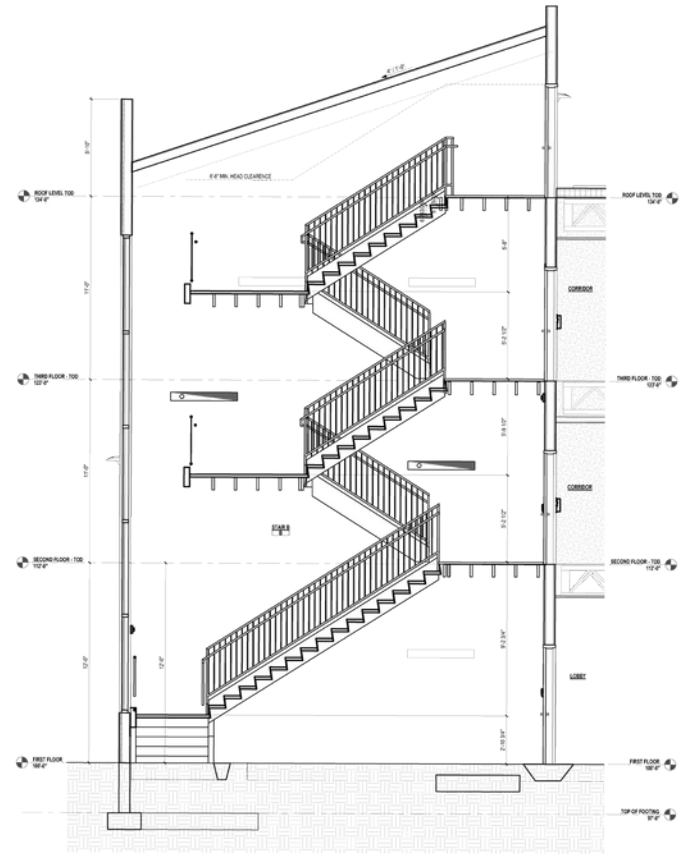
We make things right

01



Residential Project 1

CSI Global provided architectural design, civil, structural, and MEP engineering services for a three-story building with 34 units. The project scope included architectural site plans, code summaries, unit accessibility, assemblies, details, egress plans, overall building plans, and more. Structural design involved wood-framed structures, elevator shafts, and shallow foundations. Civil design covered site plans, grading, sewer and water connections, and stormwater pipes. MEP design encompassed HVAC, fire systems, electrical distribution, and hot water systems.

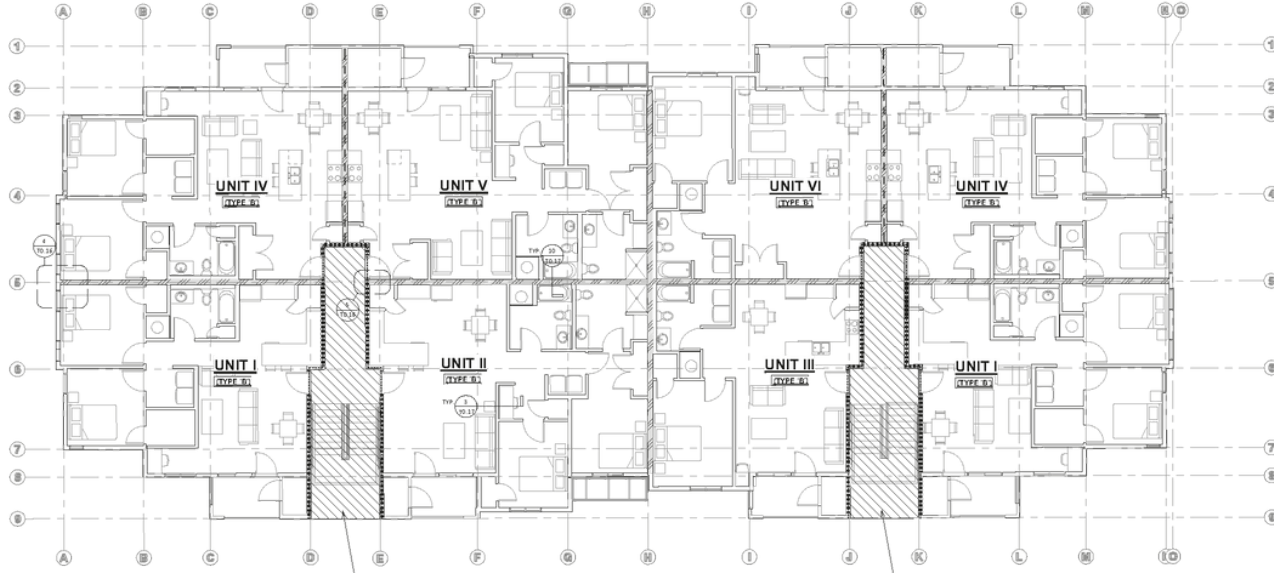


D2

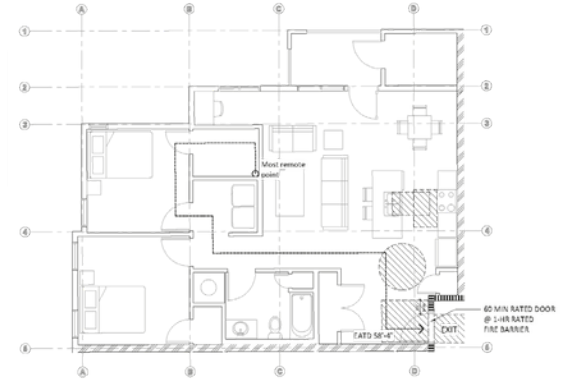


Residential Project 2

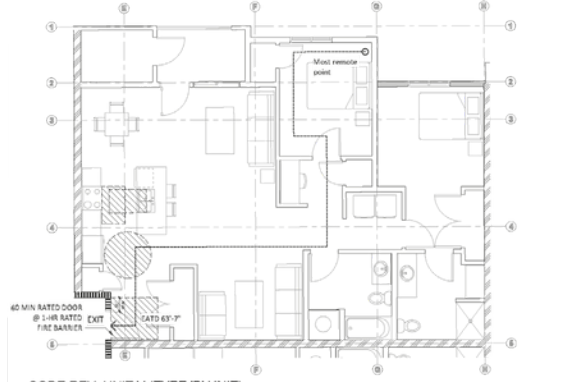
CSI Global provided detailed design services for three 24-unit apartment buildings. The project included architectural and structural engineering design, as well as site civil infrastructure design. Disciplines covered were civil engineering, site design, architectural design, and structural engineering. The deliverables included civil, architectural, and structural plans. The project was executed from February 2022 to December 2022. CSI Global offered engineering and design, BIM modeling, and project management services for this residential apartment project.



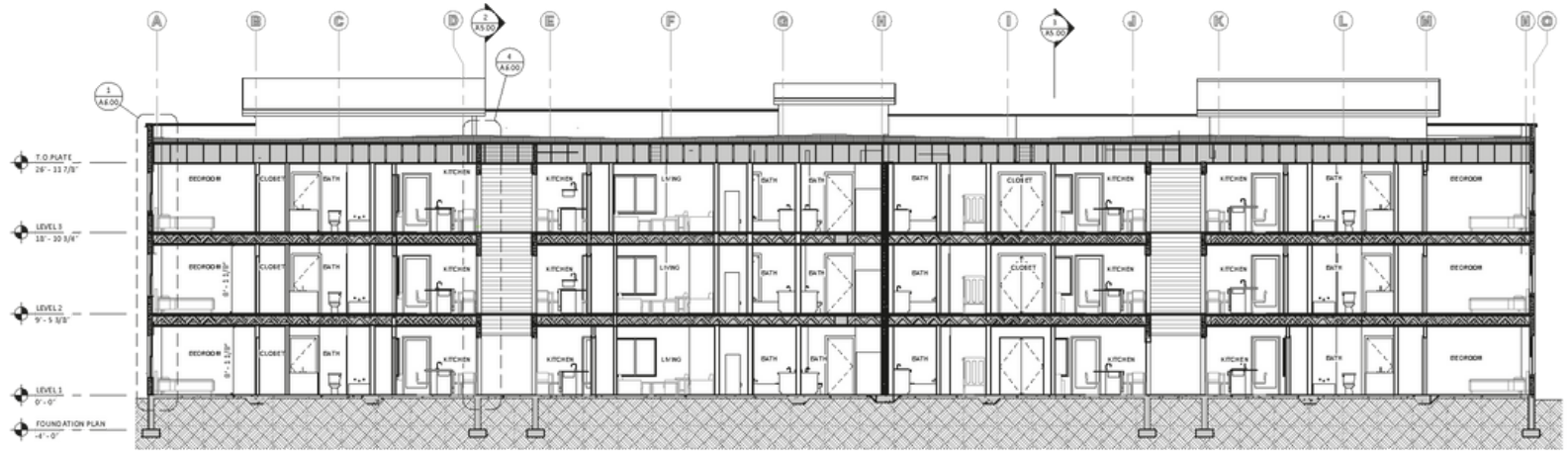
1 CODE REVIEW PLAN LEVEL 3
1/8" = 1'-0"



1 CODE REV. UNIT IV (TYPE 'B' UNIT)
1/8" = 1'-0"



2 CODE REV. UNIT V (TYPE 'B' UNIT)
1/8" = 1'-0"



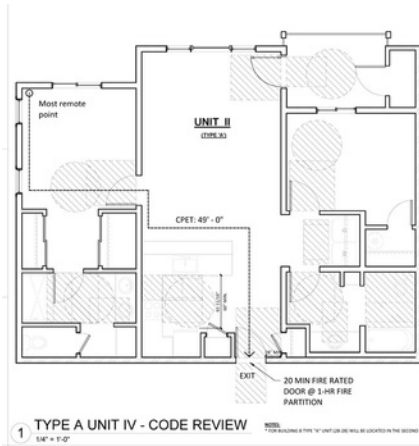
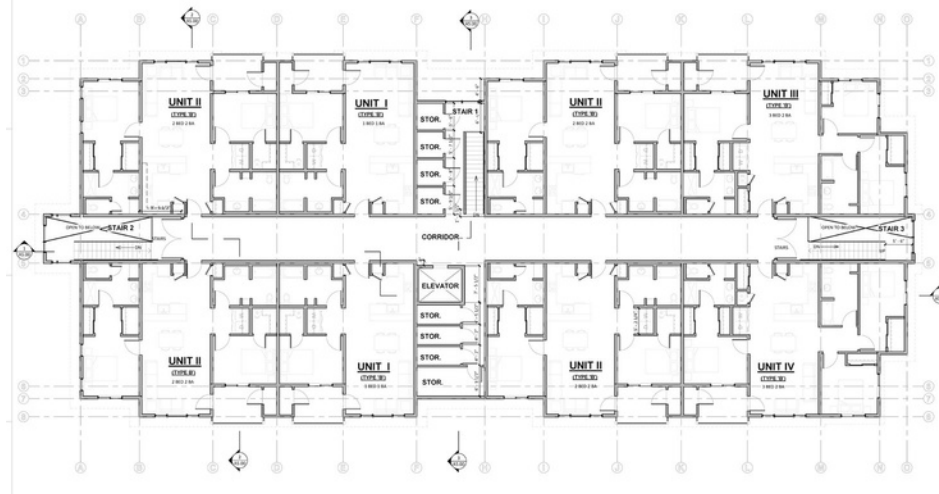
1 SECTION LOOKING WEST
1/8" = 1'-0"

03

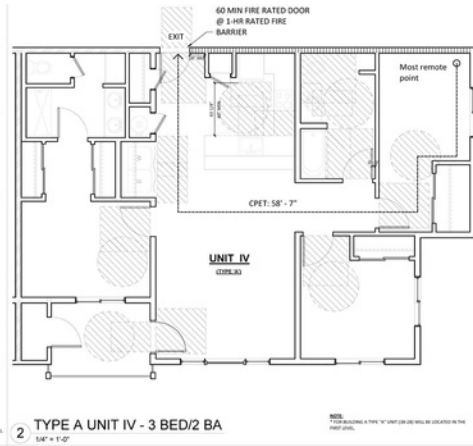


Residential Project 3

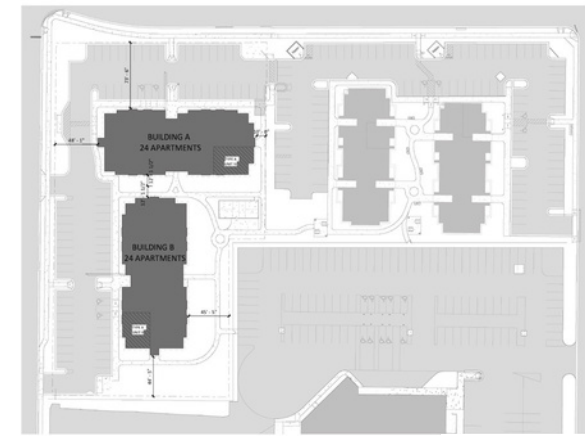
CSI Global provided architectural design and structural engineering services for the construction of two 24-unit apartment buildings. The buildings were not identical, differing in location and size of type-A units. CSI completed the structural engineering and architectural design. The design stages considered in the project included schematic design, design development, permit set, bidding set, and construction documents. Architectural services included space planning, layout, code review, floor plans, elevations, sections, and finish plans. The structural engineering services encompassed gravity and lateral resisting systems design, including foundation, floor, and roof framing plans.



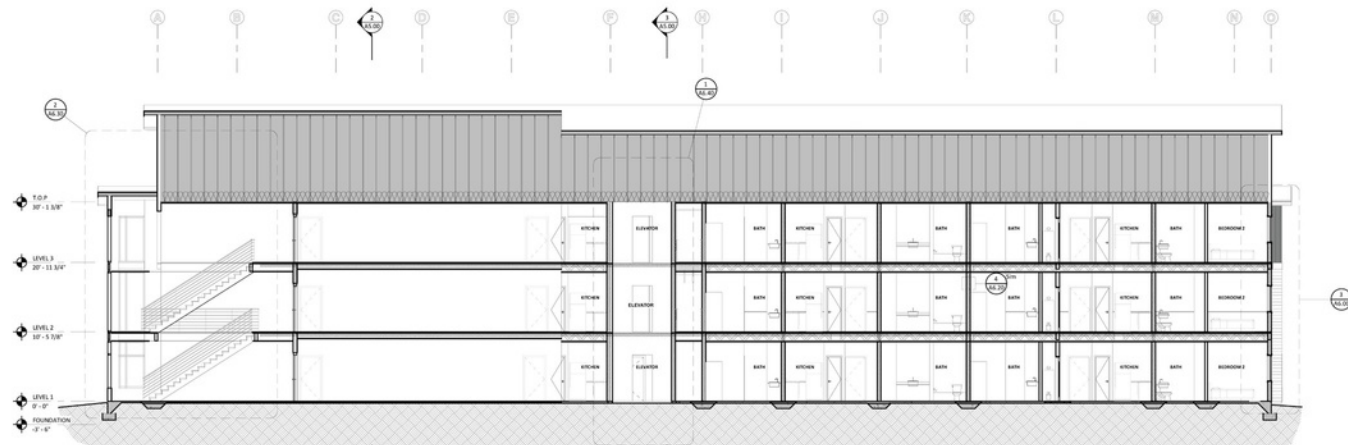
1 TYPE A UNIT IV - CODE REVIEW
1/4" = 1'-0"



2 TYPE A UNIT IV - 3 BED/2 BA
1/4" = 1'-0"



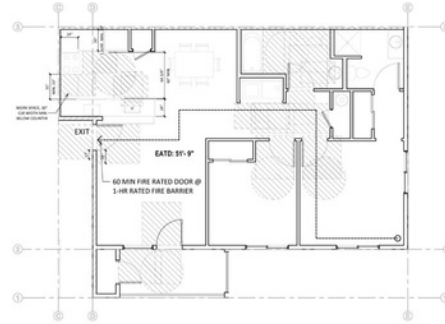
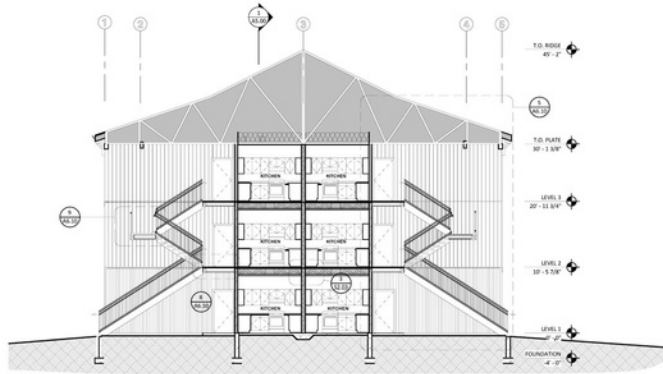
1 SITE PLAN
1" = 50'-0"



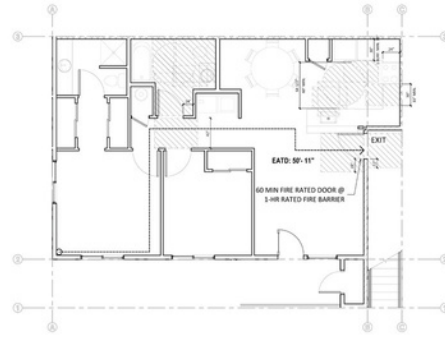


Residential Project 4

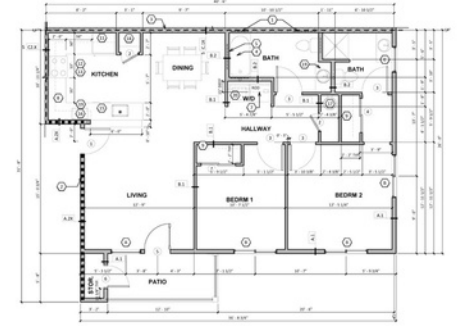
CSI Global provided detailed design services for a project consisting of architectural and structural engineering design for two 24-unit apartment buildings and two 12-unit apartment buildings. Additionally, site civil infrastructure design, including parking lots, sewer systems, water supply, and storm drainage, was included. The project involved civil engineering, architectural design, and structural engineering disciplines. Each building featured 3 levels with 8 units per floor, incorporating different typologies and considering accessibility requirements. The deliverables included permit, bidding, and construction documents.



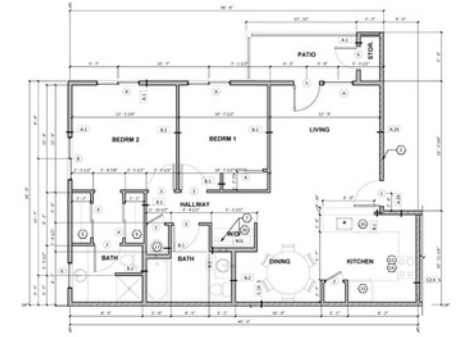
1 CODE REVIEW - UNIT I - TYPE 'A'
1/4" = 1'-0"



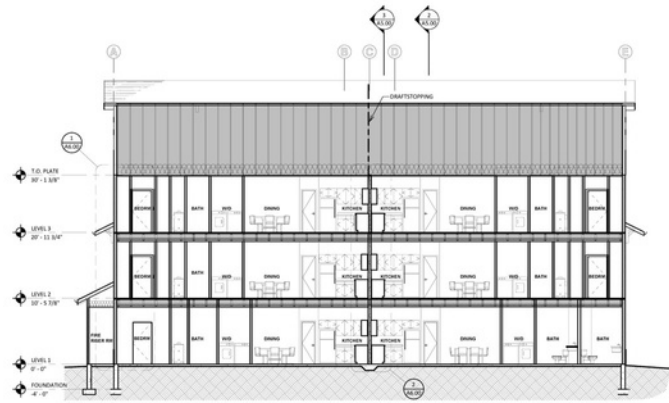
2 CODE REVIEW - UNIT I - TYPE 'B'
1/4" = 1'-0"



1 UNIT I - TYPE A
1/4" = 1'-0"



2 UNIT I - TYPE B
1/4" = 1'-0"

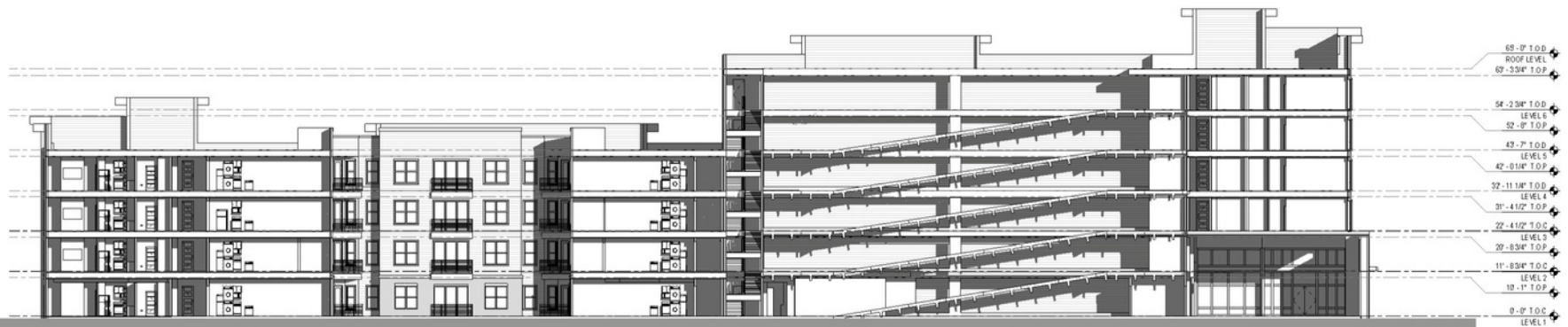


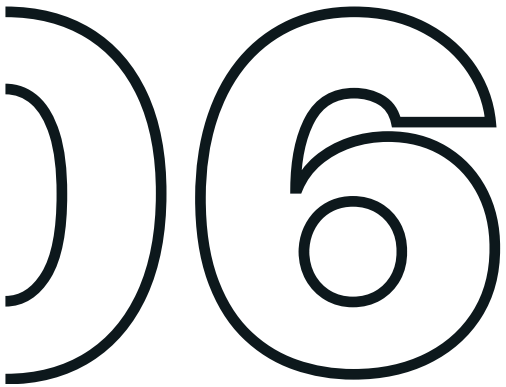
05



Central Town Center

CSI Global is providing architectural services and BIM modeling for the Central Town Center project, a master planned mixed-use development. The project includes 309 residential units, ground floor retail, and a parking garage. CSI's scope of work involves architectural design, including Design Development (DD) and Construction Document (CD) phases using Autodesk Revit. The project is executed from March 2023 to November 2023. The software used is Autodesk REVIT, and the project complies with the International Building Code.





Villa Dolores Park

CSI Global was contracted by a construction company, to carry out the executive project for the conditioning of Villa Dolores Park owned by the Montevideo Municipal Intendancy (IMM). This project, which integrates the strategy of a greener Montevideo, aims to transform Villa Dolores Park from the paradigm of old zoos into an urban park open to the city. The scope of the executive project includes: Architectural design, including landscaping advice to exchange with IMM technicians. Lighting and electrical design. Structural design, including equipment foundations (bikeracks, play equipment, seating), access gates, repair of pedestrian bridge between swan lake and turtle, mirador slab, wooden decks, deck bench, deck access ramp. Execution date: 03/2023 - In progress.

D7



Curne Rivera

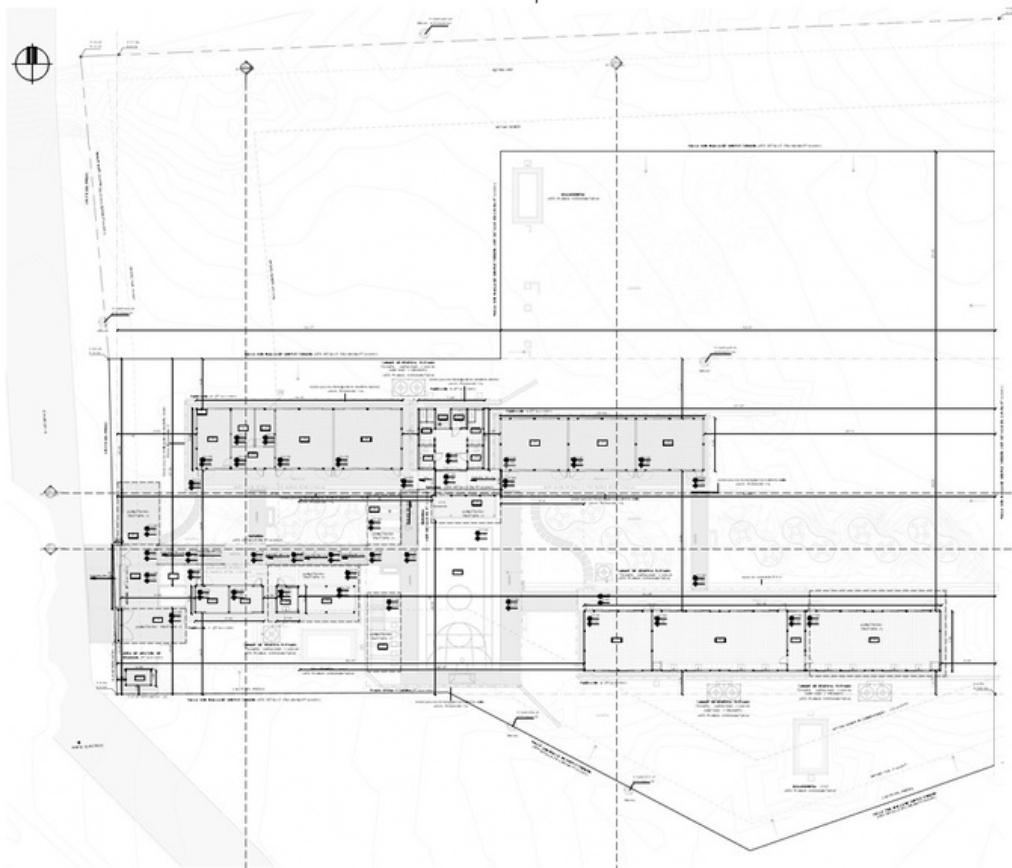
CSI Global has been awarded the contract by CIEMSA to provide detailed design services for the expansion of the CURNE University Center in Rivera. The project includes the construction of two blocks. The scope of work involves architectural design, structural design, electrical design, thermal conditioning, fire protection, acoustic conditioning, plumbing, drainage, earthworks, and permitting. The project is currently in progress with an execution date from March 2023.

08

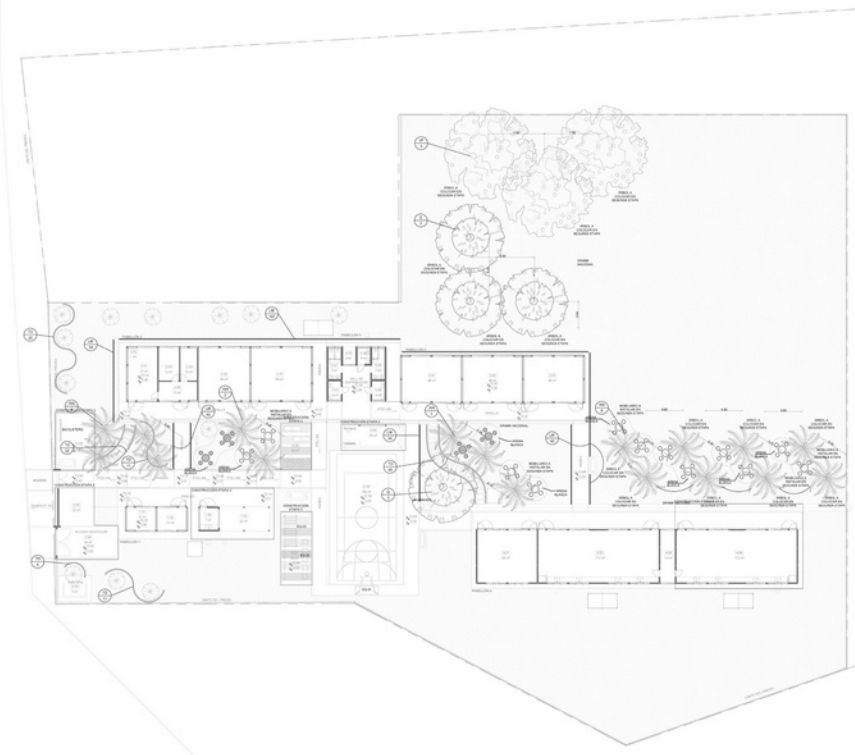


Nicaragua's schools

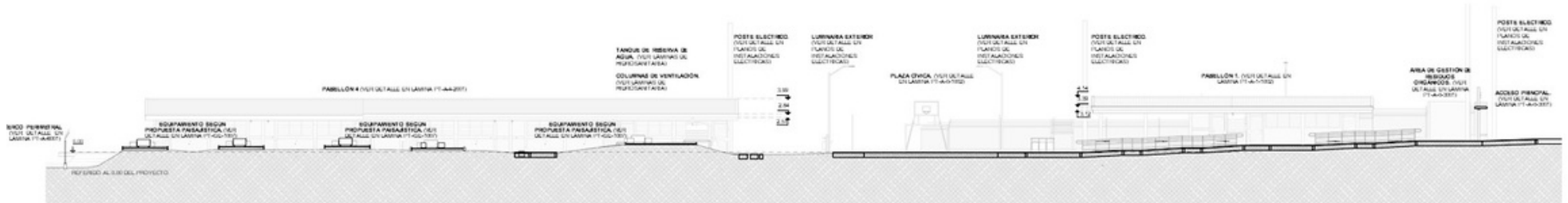
CSI Global was contracted to provide consultancy services for the development of final designs and technical studies of architecture and engineering for school infrastructure projects in Nicaragua. The project included 18 educational establishments distributed across five lots. The scope involved preliminary studies, executive project design, and complementary studies. Deliverables included functional plans, topographical and geotechnical surveys, preliminary architectural and engineering designs, and environmental management programs. The project is currently in progress, with an execution date from May 2022.



II



PLANTA ARQUITECTONICA PAISAJISTA
Escala: 1:200



SECCION X2 | 1:200
VER LAMINA PT-GE-1003



 +1 (661) 542-3387

 csi@csi-ing.com

 www.csiglobal.com